



BlueCross BlueShield
of Montana

Will you be ready?

Visit the ICD-10 page in the Provider section of our website at bcbsmt.com for information on critical steps, such as testing with BCBSMT. You'll also find answers to frequently asked questions and other tools and related resources.

Learn more!

For additional help with your office transition to ICD-10, go to AAPC.com/ICD-10/

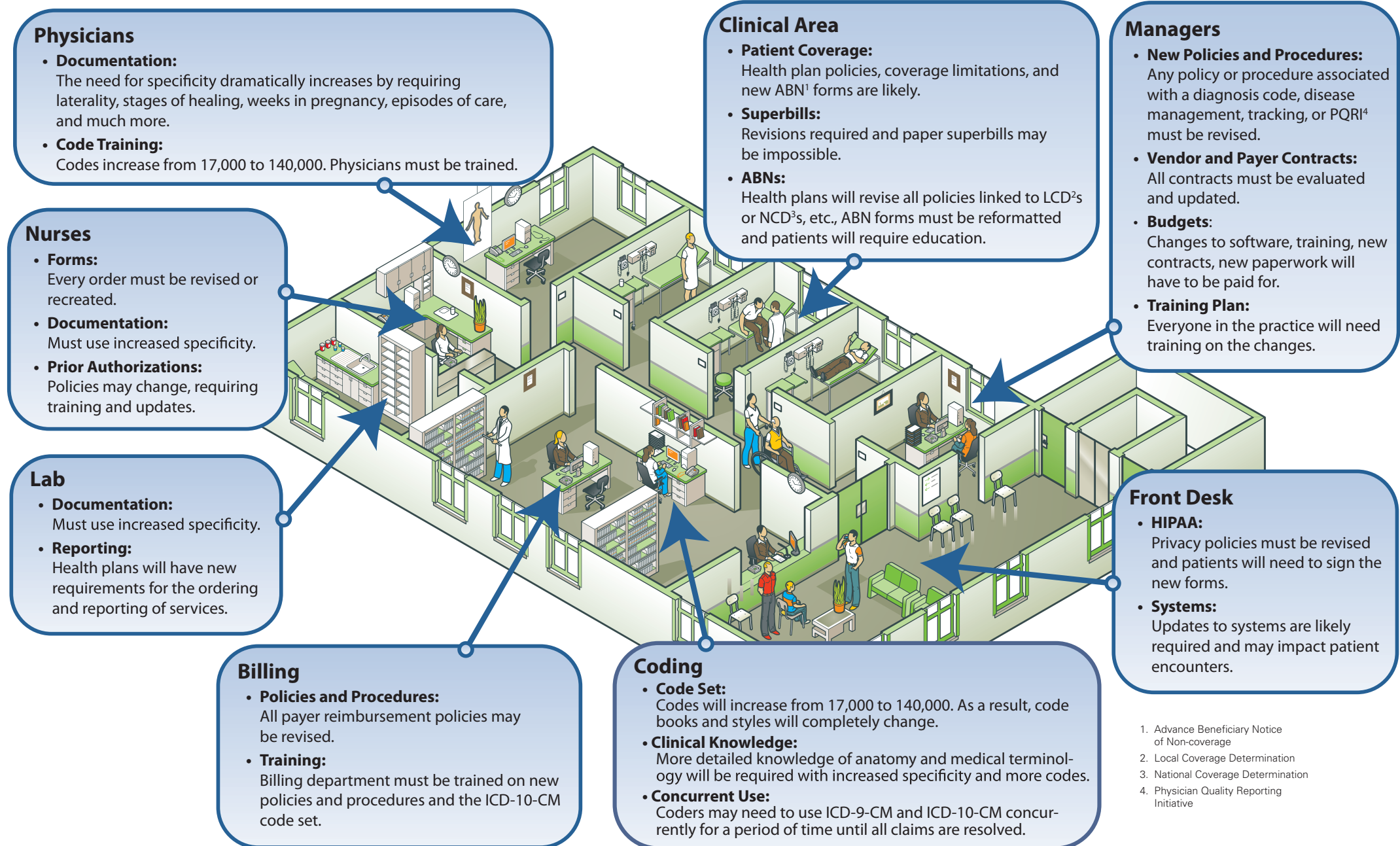


Blue Cross and Blue Shield of Montana, a Division of Health Care Service Corporation, a Mutual Legal Reserve Company, an Independent Licensee of the Blue Cross and Blue Shield Association

Blue Cross®, Blue Shield® and the Cross and Shield Symbols are registered service marks of the Blue Cross and Blue Shield Association, an association of independent Blue Cross and Blue Shield Plans.

351757.0515

ICD-10 will affect all aspects of your practice.



1. Advance Beneficiary Notice of Non-coverage
2. Local Coverage Determination
3. National Coverage Determination
4. Physician Quality Reporting Initiative